

Giant Ledge SW Isolated Ash Grove

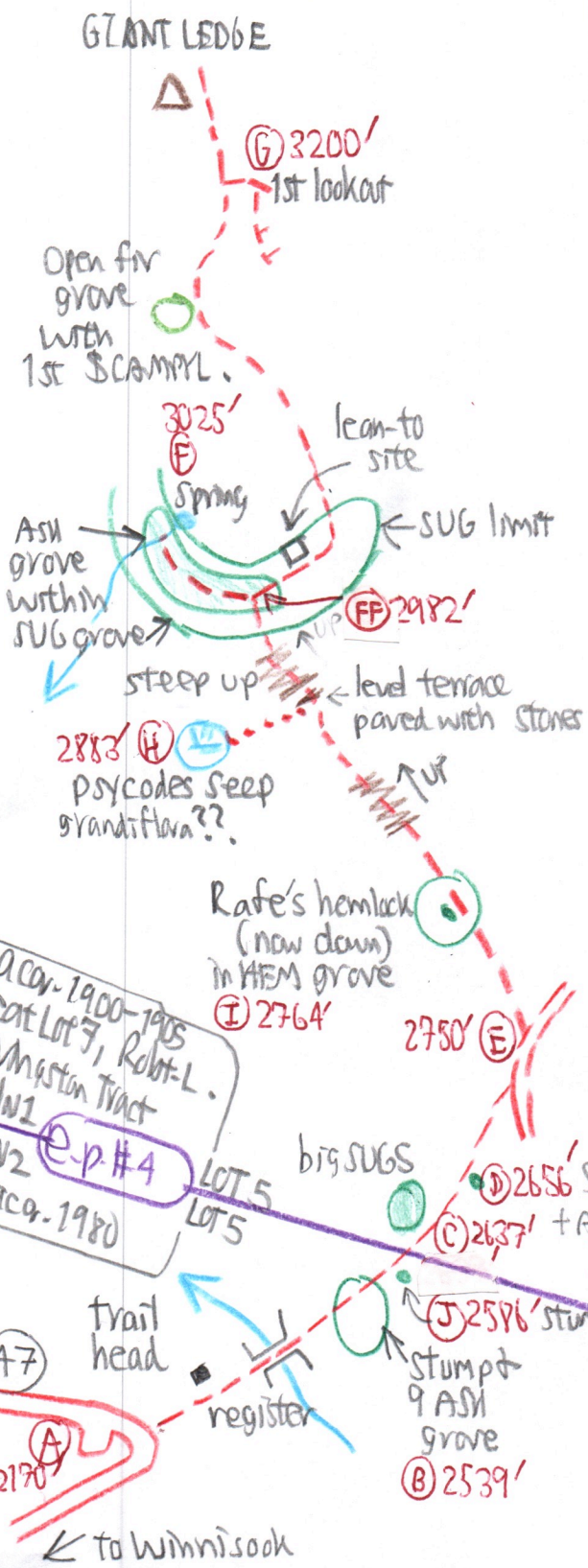
7/14/13 with Invasive Sp. Crew: Molly Marquand, John Kuhner, Samira (CCO Intern), George Vengrint & others

site	p	Δp	Δe	e calc	emap	time	R
③ Big Indian Rec-Park	30.60	-0.96	933	1237	1210'		$R_1 = \frac{3200' - 2170'}{29.64'' - 28.58''} = \frac{1030''}{1.06''} = 0.972$
① Trail head at "hairpin"	29.64	0.00	—	—	2170'	10:20 AM	
② Stump & ASH	29.26	0.38	369	2539			$R_2 = \frac{3200' - 2170'}{29.58'' - 28.54''} = \frac{1030''}{1.04''} = 0.990$
③ big SUGS e-p#4	29.16	0.48	467	2637			
④ big Street. roseus	29.14	0.50	486	2656			
⑤ Trail junction	28.98	0.66	642	2812	2750'	11:05	
⑥ Isolated ASH grove	28.76	0.88	855	3025		11:45 AM	
⑦ Giant edge } Summit }	28.58	1.06	1030	3200	3200'	12:18 PM	
⑧ } Summit }	28.54	1.04	1030	3200	3200'	1:12	
⑨ Jc-to ASH grove	28.76	0.82	812	2982			
⑩ Platanthera psycodes	28.86	0.72	713	2883			
⑪ Rafe's hemlock	28.98	0.60	594	2764		1:49	
⑫ Trail junction	28.97	0.61	604	2774	2750'		
⑬ big Street. roseus	29.12	0.46	455	2625			
⑭ Stump, e-p#	29.16	0.42	416	2586			
⑮ Trail head at "hairpin"	29.58	0.00	—	—	2170'	2:36	

$R_2 = 0.990$

ASH groves isolated may fall within isolated SUB groves, indicating the wettest sites.

170-36



(B) 2539' Stump + 3 ASH visible from trail - Molly found 6 more ASH south of trail

(J) 2586' Stump + oct. The lot line marking Winnisook Club-SM boundary, i.e. e-p # 4 is about here. Trail with steep, bouldery pitch above is in 1°. See p. 170-34 for e-p # 4 measured at 2560' -

(C) 2637' Several big SUBs to 24" indicate 1° and absent below e-p #4.

(D) 2656', 2625' False alarm. The unusually large *Stewartia rufes*, about 2 ft tall, was initially thought to be *S. amplexifolia*, but no ASH seedling.

(E) 2850' CB at trail junction

(F) 3025' Isolated ASH grove by lean-to Spring is within a SUB grove. SUBs enter ^{1st} around (H), but 1st ASH is seen at junction (FF) with sign board. John found no ASH N of the spring, although one was passed on 7/10/11 p. 174-25, at 2934'.

See pages 170-37, 38 for ASH distrib. map.

This grove is not that isolated, the nearest ASH grove at (B), but about a dozen widely-scattered individual ASH are within 1 or 2 miles

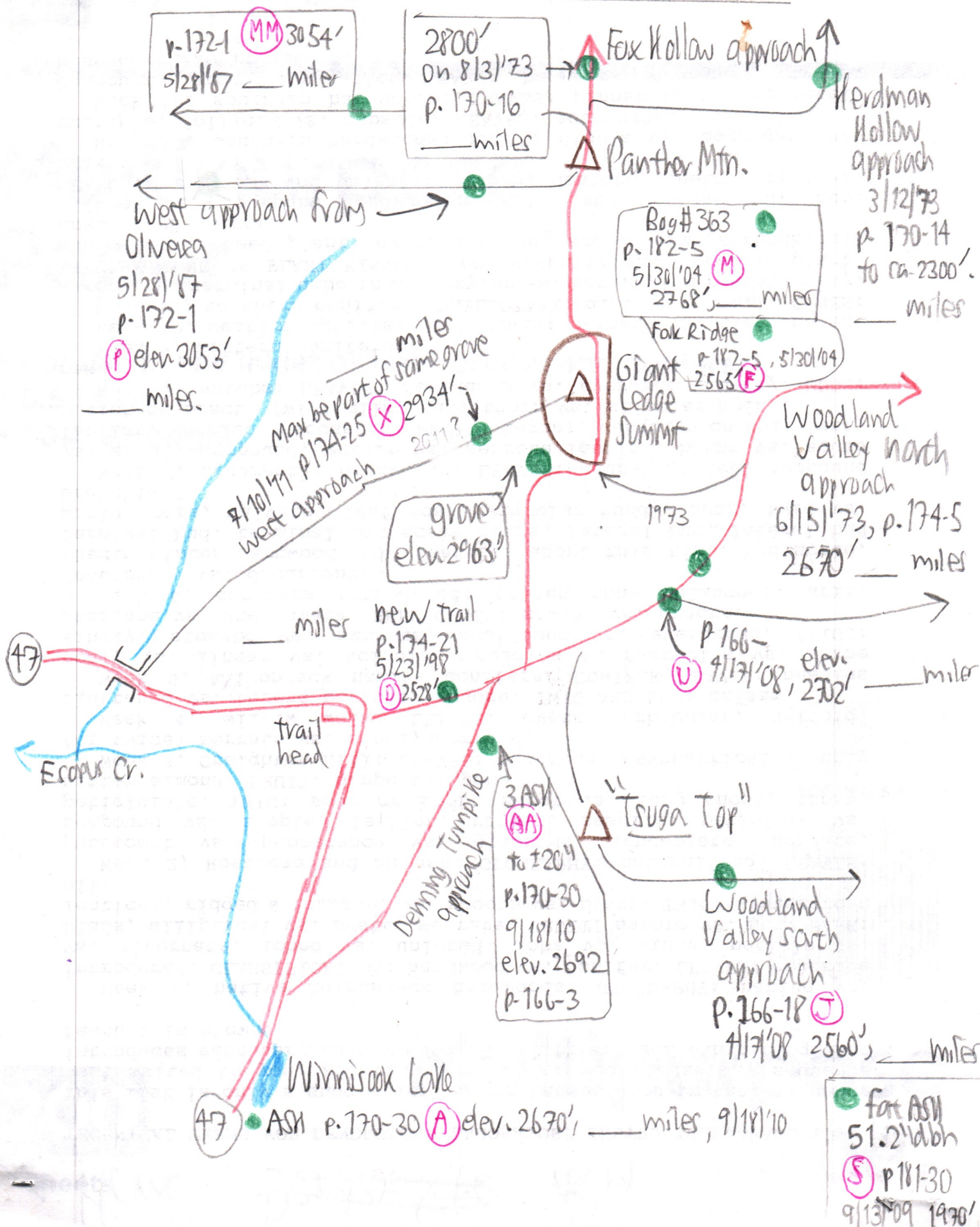
(G) 3200' The veg. along Giant Ledge East crest is a perfect example of a shrub thicket, similar to those that prob. once covered most of the W. Catskills before the advent of B-BC-RM-PB.

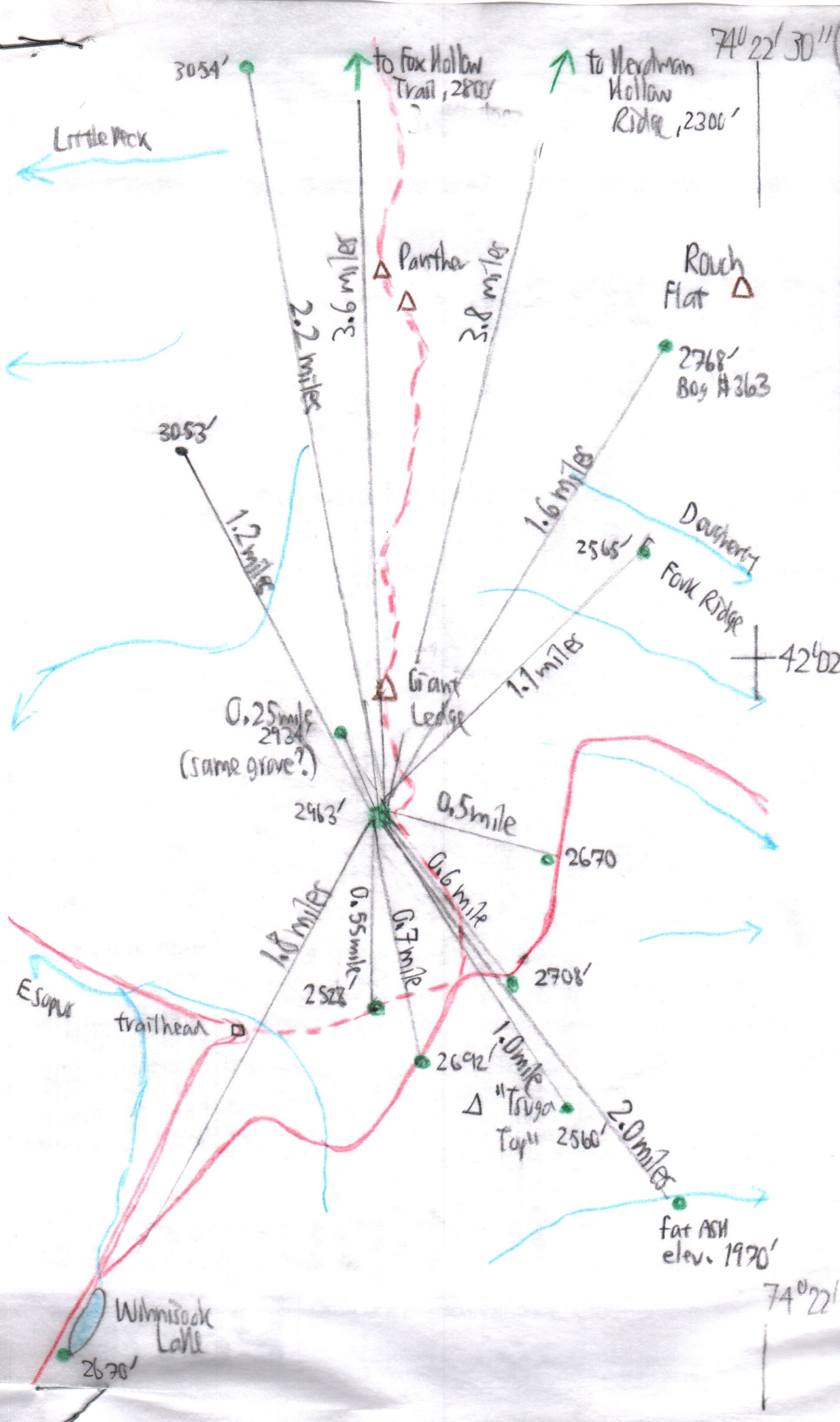
For a species listing, see pp. 170-21, * SCAMERL at fir grove.

(H) John Kuhnert's LAP-seep had about a 1/2 dozen *Platanthera psychodes* in flower the 7th station found in the CS for this species. SUBs up to 30" are impressive here, with an ASH. (Grandsiflora?)

* *Rhodo roseum*, *Vacc ang*, *SORBUS*, *Nemo*, *PEN*, *ILIX MONT*, *AMEL ARB* (at W Lookout only?)

White ash distn. around Giant Ledge (170-37)





Is the isolated white ash grove at the Giant ledge lean-to site really that isolated?

This map is traced from the 1960 Shandaken 1:24000 scale USGS Quad.

2 1/8" = 1 mile.

Distances are mainly to individual trees, not large groves, of other ash.